



[This Photo](#) by Unknown Author is licensed under [CC BY-NC](#)

# Grandfamilies in COVID-19 National Study

*GrOW Practice Strategies and Recommendations*



# Welcome & Introduction

Kerry Littlewood, Ph.D., MSW

Michelle Rosenthal, Ph.D.





[This Photo](#) by Unknown Author is licensed under [CC BY-SA-NC](#)

## Outline for Webinar

1. GrOW's Mission with National Survey on Grandfamilies and COVID-19
2. Research to practice recommendations
  - A. Program Administration
  - B. Gerontology
  - C. Grief and Loss
  - D. Legal
  - E. Well-being
3. Next Steps

# Grandfamilies Outcome Workgroup (GrOW) Mission

GrOW is a national coalition of multi-disciplinary stakeholders that work across systems of care in partnership with kinship families.

GrOW intentionally integrates the lived experiences of kinship caregivers in its methods, tools and resources to support best practice in the field of kinship care.



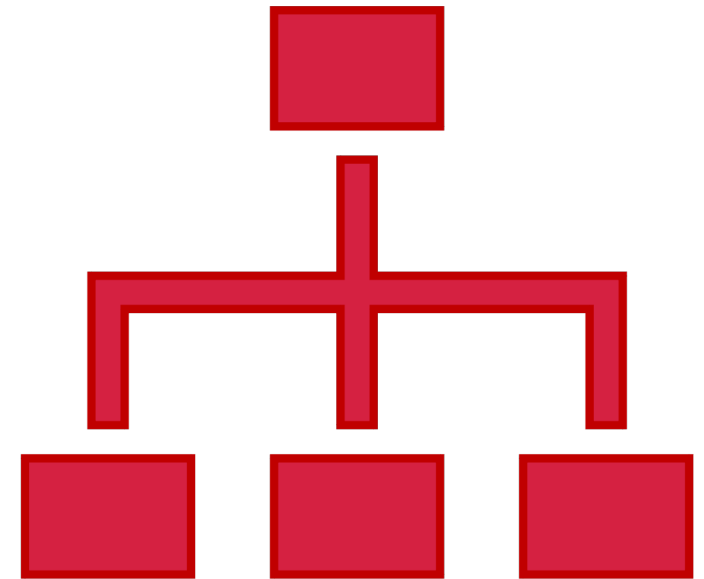


The Grandfamilies Outcome Workgroup (GrOW) was created in 2009 as part of a collaborative effort to identify and evaluate outcomes related to programs and interventions for grandparents and other relatives raising children.



# Program Administration

Larry Cooper, MSW, LCSW



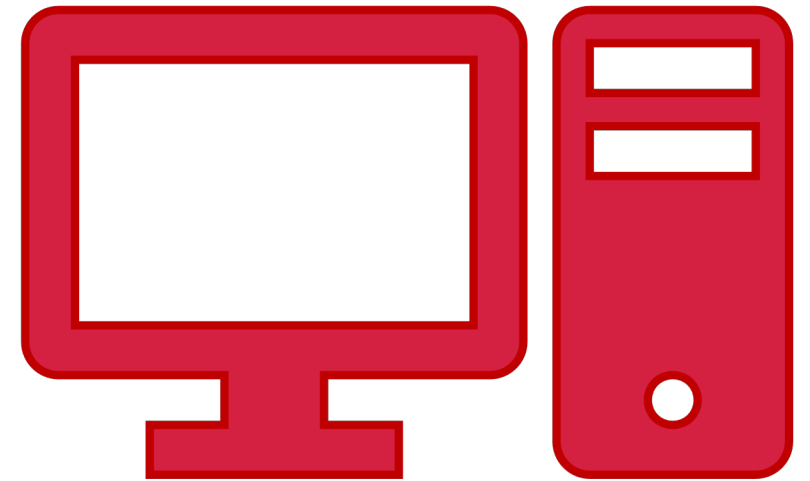
# Finding Resources

- AARP GrandFacts:  
<https://www.aarp.org/relationships/friends-family/grandfacts-sheets/>
- Grandfamilies.org: <https://grandfamilies.org>
- Brookdale Foundation Relatives as Parents Program (RAPP):  
<http://www.brookdalefoundation.net/RAPP/rapp.html>



# Increase Technology Comfort

Donna Fedus, MA





# Finding Resources

**Search Strategies** - Mix & match these search terms with or without zip code

- *Tech tutoring for older adults*
- *Older Adults Technology*
- *Technology Training*
- *Adult Computer Classes*
- *Senior Computer Classes*
- AARP offers free technology training in 36 U.S. markets (2018)
- Apple offers free training on Apple products
- GCFLearnFree.org – free training supported by Goodwill Community Foundation

# Selected Articles

*How to Become Tech Savvy Seniors in 10 Days*

<https://aginginplace.org/how-to-become-tech-savvy-for-seniors-in-10-days/>

*Where to Find Free Computers for Seniors*

[https://seniors.lovetoknow.com/Free\\_Computers\\_for\\_Seniors](https://seniors.lovetoknow.com/Free_Computers_for_Seniors)

*Technology and Aging: An Evolving Partnership*

The Gerontologist, Volume 59, Issue 1, February 2019

<https://academic.oup.com/gerontologist/issue/59/1>



# Grief and Loss

Deborah Langosch, PhD, LCSW



# Resources



*The  
Compassionate  
Friends*  
Supporting Family After a Child Dies



# Legal & Family Systems

Amy Roehl Devine, J.D., M.S.W.



## STRATEGIES AND RECOMMENDATIONS

- Check with State and local bar associations for free or low-cost legal help
- Check with State Kinship Navigator program to see if they offer legal information or other resources
- Many states have informal designations for education and health care with forms available online

# RESOURCES

- Law Help: <https://www.lawhelp.org>
- Eldercare Locator: <https://eldercare.acl.gov/Public/Index.aspx>
- State Kinship Care Contacts and Programs: [https://www.childwelfare.gov/organizations/?CWIGFunctionsaction=rols:main.dspList&rolType=Custom&RS\\_ID=148](https://www.childwelfare.gov/organizations/?CWIGFunctionsaction=rols:main.dspList&rolType=Custom&RS_ID=148)



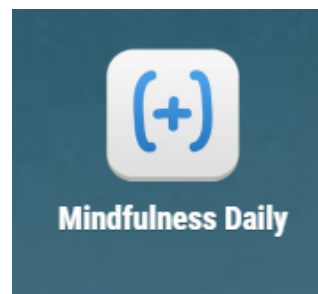
# Well-Being

Abhishek Pandey, MD





# Mindfulness Apps



# Thank You & Next Steps

[www.grandfamilieswork.org](http://www.grandfamilieswork.org)





**LARRY COOPER, MSW, LCSW (FL)** - Child Welfare, Kinship & Prevention Program Specialist

**AMY DEVINE, JD, MSW (WI)** - Legal and Family Systems Specialist in Practice & Advocacy

**DONNA FEDUS, MA (CT)** - Gerontologist Educator

**DEBORAH LANGOSCH, PHD, LCSW (NY)** - Clinical Social Worker Specializing in Family Trauma, Grief & Loss

**KERRY LITTLEWOOD, Ph.D., MSW (FL)** - Academic Researcher & Evaluator on Systems of Care

**ABHISHEK PANDEY, MD (NY & PA)** - Physician Scientist & Well-Being & Sleep Specialist

**MICHELLE ROSENTHAL, PH.D. (CA)** Anthropologist Specializing in Culturally Responsive Equitable Evaluation





[This Photo](#) by Unknown Author is licensed under [CC BY-NC](#)

# Grandfamilies in COVID 19 National Study

*GrOW Practice Strategies and Recommendations*

